



Newsletter On-Line

Published by Chi Epsilon, National Civil Engineering Honor Society
National Headquarters at the University of Texas at Arlington, Arlington, TX
MEMBER OF THE ASSOCIATION OF COLLEGE HONOR SOCIETIES

Number 54

www.chi-epsilon.org

Summer 2014

PERSONAL QUALITIES

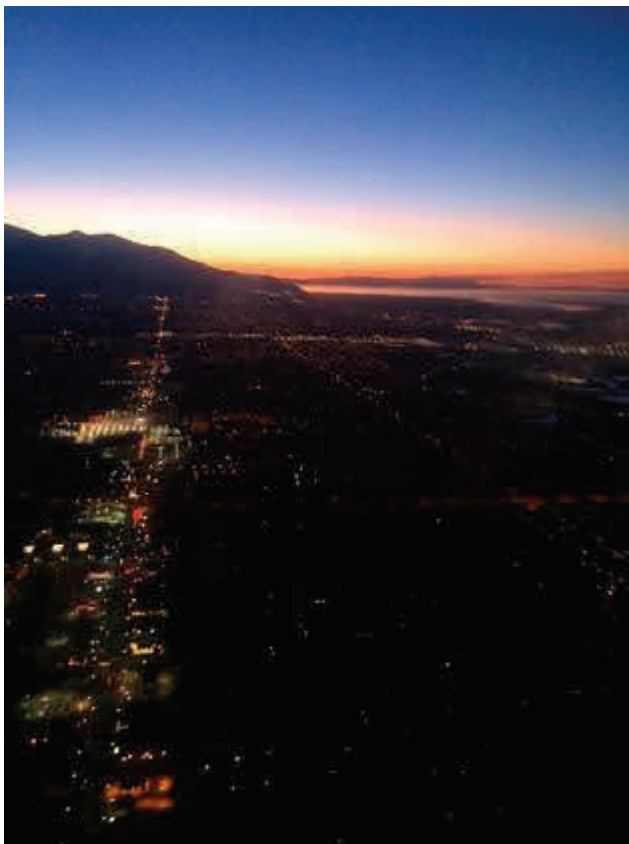
Scholarship, Character, Practicality, and Sociability

are the fundamental requirements for membership in Chi Epsilon.

You will recognize that these qualities, which Chi Epsilon seeks
in its members, are the attributes which contribute
to successful living.

Salt Lake at Sunset

*By Megan Long (chapter president)
University of Wisconsin-Madison*



At the 43rd National Chi Epsilon Conclave in Salt Lake City, student attendees were encouraged to participate in a photo competition. The judging was based on creativity, composition, content, and overall fit within the theme of “Moments in the Mountains”. The photo best meeting all of these criteria is pictured to the left.

The contest winner, **Megan Long**, president of the University of Wisconsin-Madison chapter, said, “I took the picture flying into Salt Lake City at sunset Wednesday night. It contains infrastructure (artfully alluded to), mountains, and the Great Salt Lake. I thought it was a pretty aesthetically pleasing photo that will always remind me of the great time I had at the conclave.”

As the first annual 2014 Chi Epsilon National Conclave Photo Competition winner, Megan received a drafting kit.



CHI EPSILON

National Civil
Engineering
Honor Society

University of Texas-Arlington
PO Box 19316
Arlington, TX 76019-0316

866.554.0553 (PH)

817.274.7643 (FAX)

xehq@uta.edu

www.chi-epsilon.org



Newsletter On-Line

MESSAGE FROM: THE EDITOR

I've been reading through some of the historic TRANSITS to get a sense of where we've come from and to attempt to catch a vision for where we could be headed with this publication. Based on my cursory review, the early years of Chi Epsilon were spent building a national community of individuals focused on delivering Chi Epsilon's purpose.

- ♦ ***Maintain and promote the status of civil engineering as an ideal profession***
- ♦ ***Recognize the fundamental characteristics of successful civil engineer***
- ♦ ***Improve the profession***
- ♦ ***Foster development and exercise of sound traits of character and technical ability***

As Chi Epsilon has added members and new chapters, we seem to have lost some of the sense of community we had when the organization was started. We have a saying; "Once a member – always a member". But does Chi Epsilon really stay active in the minds of Civil Engineers once they graduate? Are we, the national organization and the individual chapters, doing everything to keep our alumni members actively involved with Chi Epsilon?

In the early years, the Transit Editors received stories, poems and letters from dedicated members telling others about their experiences as civil engineers.

Many of these were published in the Transit. There was a section titled "It May be News" where brief reports from alumni meetings and other similar announcements were posted. Also included was an "Alumni News Notes" section where in a couple of sentences a member could let others know where they were at and for whom they were working. In later years, members were encouraged to send in news of births, weddings, activities or other information which might be of interest to the membership. Sadly, much of the personal touch seems to have been lost as the size of the published version of the Transit was reduced to contain printing and postage costs.

Fortunately, this is not an issue for our on-line publications. I would like to encourage our members, and particularly our alumni, to once again consider providing stories, poems and letters for inclusion in the Transit. We'd also like to share your thoughts about the Chi Epsilon experience and how association with XE has impacted your career. If you would like to participate in this venture, please send your submittal to Dr. Glenn C. Goss, Editor, at exec.sec@chi-epsilon.org.

We welcome comments and suggestions for improvement to any of the printed or on-line publications.



Newsletter On-Line

2014 SCHOLARSHIP WINNERS

Ten national scholarships in the amount of \$3500 each were awarded to Chi Epsilon members for 2014. These were awarded in the name of John A. Focht, Bro. B. Austin Barry, Arthur N.L. Chiu, Joseph L. Brandes, Dexter C. Jameson, Jr, Neil J. Rowan, Eugene A. Glysson, and Olin K. Dart, Jr.. The funds for these scholarships were made possible by the generous contributions of members Chi Epsilon. Also, two graduate student fellowships of \$3500 each, and a total of ten district scholarship, each for \$2000, were awarded this year. The grand total of scholarship funds awarded in the spring of 2014 was \$62,000.

JOHN A. FOCHT NATIONAL SCHOLARSHIPS



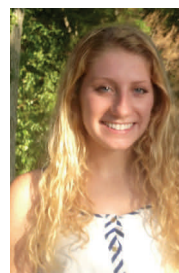
Corey King
University of South Carolina
BS in CE, May 2015

BRO B. AUSTIN BARRY NATIONAL SCHOLARSHIPS



Samantha Frederick
Mississippi State University
BS in CE, December 2014

ARTHUR N. L. CHIU NATIONAL SCHOLARSHIP



Sarah Ann Cote
Worcester Polytechnic Institute
BS in CE, May 2014



Sathya Mathavan
George Mason University
BS in CEE, May 2014



Caroline Williams
Michigan State University
BS in CE, May 2014

JOSEPH L. BRANDES NATIONAL SCHOLARSHIP



Jennifer Kearney
Pennsylvania State University
BS in CE, May 2015

Newsletter On-Line

DEXTER C. JAMESON
NATIONAL SCHOLARSHIP



Kexin Chen
University of Illinois
BS in CE, May 2014

NEIL J. ROWAN
NATIONAL SCHOLARSHIP



Kayla Arruda
Northeastern University
BS in SE, May 2015

EUGENE A. GLYSSON
NATIONAL SCHOLARSHIP



Oliver Haughland
Marquette University
BS in CE, December 2014

OLIN K. DART
NATIONAL SCHOLARSHIP



Diana Kapanzhi
University of Mississippi
BS in CE, May 2014

GRADUATE FELLOWSHIP
CUMBERLAND DISTRICT



Amelia 'Amy' Shaw
Vanderbilt University
PhD in EE, May 2015

GRADUATE FELLOWSHIP
SOUTHERN DISTRICT



Andric Hofrichter
Auburn University
MS in CE, May 2014



Newsletter On-Line

CENTRAL DISTRICT SCHOLARSHIP



Zachary Treece
University of Missouri
BS in CE, May 2014

CUMBERLAND DISTRICT SCHOLARSHIP



Brendon Woodruff
Virginia Tech
BS in CE, May 2014

GREAT LAKES DISTRICT SCHOLARSHIP



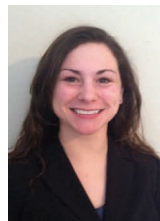
Elizabeth Andruszkiewicz
University of Notre Dame
BS in CE, May 2014

METROPOLITAN DISTRICT SCHOLARSHIP



Matthew Weschler
University of Pittsburgh
BS in CE, April 2014

NORTH CENTRAL DISTRICT SCHOLARSHIP



Emily Sumner
South Dakota State University
BS in CE, May 2014

PACIFIC DISTRICT SCHOLARSHIP



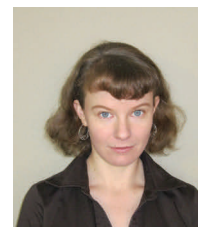
Neil Azaren
Cal State University-Long Beach
BS in CE, December 2014

PACIFIC DISTRICT SCHOLARSHIP



Emily Valenzuela
University of Hawaii
BS in CE, May 2014

ROCKY MOUNTAIN DISTRICT SCHOLARSHIP



Julia DeGagne
Portland State University
BS in EE, June 2014



Newsletter On-Line

ROCKY MOUNTAIN DISTRICT SCHOLARSHIP



Lucas Whitesell
University of Washington
BS in CE, June 2014

SOUTHERN DISTRICT SCHOLARSHIP



Taylor Laurent
University of Central Florida
BS in CEE, May 2015

2014 DISTRICT EXCELLENCE IN TEACHING AWARD WINNERS

DISTRICT	RECIPIENT	UNIVERSITY
Central	Scott Olson	Illinois
Great Lakes	Valeriy Ivanov	Michigan
Metropolitan	Kelly Salyards	Bucknell
Northeast	Satish Mohan	SUNY
Southern	Jose Vasconcelos	Auburn



Newsletter On-Line

Dr. Jose Vasconcelos **2014 National James M. Robbins Excellence in Teaching Award**



Dr. Vasconcelos feels that as a professor his task could not be more important or relevant, and he is committed to continuously improving as an instructor. He requires his students to visit his office - for their benefit. When explaining concepts, he always uses real-world examples to show practicality. Dr. Vasconcelos provides students with the opportunity to integrate skills through assignments that require work in technical writing, presentations, hand calculations, and the use of computer software - all skills that are vital to the success of a career in engineering.

Dr. Satish Mohan **2014 National Arthur N.L. Chiu Outstanding Faculty Advisor Award**

Dr. Mohan has been a constant source of strength to the University of Buffalo chapter. He is a compassionate individual who always encourages members to strive for their best in all endeavors. He has provided countless advice, whether it be what classes would suit their goals, what career prospects are available, scholarship opportunities, and much more. His door is always open to anyone. He inspires them to be the best human beings they could be through high standards in academics, public service, professionalism, and sociability. He is a true embodiment of what Chi Epsilon represents.

Dr. Mohan brought back the University of Buffalo's chapter of Chi Epsilon, after having all previous members graduate or transfer, three years ago. He restarted the chapter beginning with 6 members in the fall of 2011 and by the end of November, chapter 70 had 30 current members and 6 graduate students. Dr. Mohan's dedication and commitment to the University of Buffalo's chapter of Chi Epsilon goes above and beyond that which is required for a faculty advisor.





Newsletter On-Line

KEY NOTES

Michael J. Dellies ('83 BSCE, Texas Tech; '94 MSCE, UTA) was selected by the Fort Worth chapter of the Texas Society of Professional Engineers as the 'Engineer of the Year' for 2014.

Dr. Mohammad Qureshi ('88 BSCE, California, Berkeley) was appointed on March 5th, 2014, by Governor Jerry Brown to serve on the California Board of Professional Engineers, Land Surveyors, and Geologists.

Theodore (Ted) E. Diamond ('86 BSCE, Michigan Technological University) presently works as an Advisory Engineer in the Civil & Layout Department of AREVA Inc., in Charlotte, NC.

Kevin L. Johnson, P.E. ('81 BSCE, Pennsylvania; and '83 MSCE, Villanova University) was one of four engineers selected by Pennsylvania Governor Tom Corbett to serve on his Transportation Funding Advisory Commission that developed a series of comprehensive transportation funding measures that served as the Blueprint for approval of Act 89 which is phasing in an increase in transportation by a record \$2.5 billion per year for all modes by 2018.

Curt M. Hubbert ('75 BSCE, Alabama – Tuscaloosa) is currently employed by the Alabama Department of Transportation. Presently serves on the City of Guin Water Board. Gentleman rancher, avid gardener, and instrument-rated private pilot.

Laura Cummings, P.E. ('87 BSCE, Texas A&M) was appointed to be a member of the New Jersey Department of Environmental Protection's Drinking Water Quality Institute. Ms. Cummings is currently the Executive Director/Chief Engineer for the Southeast Morris County Municipal Utility Authority.

Michael P. Walther, P.E., D.CE ('77 M.S., Texas / '75 B.E.S., Texas) has 36 years in consulting practice and is approaching 30 years as President of Coastal Tech. Recognized with a *Jim Purpura/T.Y. Chiu Engineering Award* given to Mr. Walther for his "outstanding scientific contribution".

Ronald O. Hamburger ('74 BSCE, MSCE, Polytechnic Institute of New York) received the 2014 *Walter P. Moore Award* from the Structural Engineering Institute for a lifetime of achievement in development of building codes and standards.

Carol Tschudi Walczyk ('89 BE, Cooper Union) was elected Chair of the New Jersey Section of the American Water Works Association. Ms. Walczyk is currently a Vice-President in the Water/Wastewater Division of Hatch Mott MacDonald in Iselin, New Jersey.

Jimmy A. Doty ('72 BSCE, Texas; '74 MSCE, Illinois) will assume the office of President of the Richardson, Texas, Rotary Club on July 1, 2014, for a one-year term. Doty serves as Principal at The Doty Consulting Group, Inc., a diversified consulting practice based in Richardson. He heads the portion of the practice providing residential foundation inspections as well as quality assurance and municipal engineering.

K. Wayne Lee, PhD, P.E., F.ASCE ('82 BSCE, Seoul National University; '78 MSCE, Rutgers; '82 PhD, Texas) is serving as the 2nd President of KSCEE (Korean-American Society of Civil and Environmental Engineers) beginning the first of this year. Dr. Lee also recently received a Presidential Citation from the Korean government for his lifelong achievements in research and dedicated services to the professional and local Korean community.

Timothy R. Berry, P.E., D.E.E. ('72 BSCE, Montana State; '91 XE CHM, Montana State) was honored by the Montana Section AWWA and the Montana Water Environment Section with a Lifetime Achievement Award for contribution to the water and wastewater industry in the State of Montana.



Newsletter On-Line



Congratulations to the 2014 National Student Steel Bridge Competition Champions

1st Place: University of California, Davis
2nd Place: Massachusetts Institute of Technology
3rd Place: University of California, Berkeley

The 2014 National Student Steel Bridge Competition was held on May 23 and 24 at The University of Akron. This year marked the 23rd anniversary of the National Student Steel Bridge Competition and the 28th anniversary of the conference-level Student Steel Bridge Competitions. This prestigious competition offered future structural engineers the opportunity to display their skills in steel design, steel fabrication, and teamwork. Forty-seven student teams from across the United States, Canada and Mexico participated in the 2014 NSSBC.

The mission of the ASCE/AISC Student Steel Bridge Competition (SSBC) is to supplement the education of civil engineering students with a comprehensive, student-driven project experience from conception and design through fabrication, erection, and testing, culminating in a steel structure that meets client specifications and optimizes performance and economy. The SSBC increases awareness of real-world engineering issues such as spatial constraints, material properties, strength, serviceability, fabrication and erection processes, safety, esthetics, and cost. Success in intercollegiate competition requires effective teamwork and project management. Future engineers are stimulated to innovate, practice professionalism, and use structural steel efficiently.

Next year's NSSBC will be held May 22-23 at the University of Missouri-Kansas City. To learn more about the NSSBC, visit www.aisc.org/steelbridge or www.nssbc.info.



Newsletter On-Line

Tau Beta Pi Awards 25 Fellowships, Two to Chi Epsilon members

The Fellowship Board of Tau Beta Pi, the engineering honor society, announces the selection of 25 young engineering students from 286 applicants for graduate fellowships in 2014-15. All of this year's recipients will receive cash stipends of \$10,000 for their advanced study. More than \$5,950,000 in stipends will have been given by the Society when this 81st group of fellows completes its graduate work. All Tau Beta Pi Fellowships are awarded on the competitive criteria of high scholarship, campus leadership and service, and promise of future contributions to the engineering profession. All fellows are members of Tau Beta Pi and may do their graduate work at any institution they choose.

Tau Beta Pi was founded at Lehigh University in 1885. It has collegiate chapters at 242 engineering colleges in the United States and active alumni chapters in 35 cities. It has initiated more than 550,000 members in its 129-year history and is the world's largest engineering society.



Brandon J. Tripp, studying petroleum engineering at the University of Alabama at Birmingham, won the **Nagel Fellowship**. The **Nagel Fellowship** is given to honor Robert H. Nagel, PE, NY, 1939, for his service as Editor and Secretary-Treasurer during 1942-82, and as Secretary-Treasurer Emeritus in 1982-97.

John A. Wagner, studying civil engineering at North Carolina State University, won the **Matthews Fellowship**. The **Matthews Fellowship** is awarded in honor of R.C. "Red" Matthews, II '1902, who served as Secretary and Secretary-Treasurer in 1905-47 and as Secretary-Treasurer Emeritus in 1947-78.





Newsletter On-Line

Join today at www.asce.org/join. It's easy and FREE, and you'll receive immediate access to the following benefits:

Make myASCE Yours - ASCE's social media page will connect you to your fellow student members and professional engineers. Create and join ASCE groups to start discussions and contribute your opinions.

Civil Engineering News Online When You Need It - Make ASCE the first place you come for the latest on the profession, using these outlets:

♦ASCE SmartBrief - handpicked articles with the day's leading industry stories delivered to your inbox daily. www.asce.org/smartbrief

♦CE Magazine - the industry's remarkable projects and people are online each month in this award-winning magazine with special exclusive members-only online articles. www.asce.org/cemagazine

♦ASCE eNewsletter - delivered to your inbox every other week, find ASCE updates and specials, including member benefits, conferences, and CE jobs.

As an ASCE student member, you can tap into ASCE's career resource site to set yourself on the right career path. www.asce.org/careers

Polish your resume with ASCE's resume critique, apply for your next summer internship or first job, and then check out interviewing tips to help you land the position.

♦Download entry-level salary information FREE using The Engineering Income and Salary Survey. www.asce.org/salaries

♦Take advantage of online or in-person ASCE mentoring programs and gain perspective and guidance to navigate the initial steps of a successful engineering career. www.asce.org/mentoring

♦Apply for ASCE student awards and get recognition for your excellent work — and the perfect bullet for your resume. www.asce.org/awards

♦Apply for more than \$75,000 in ASCE scholarships and fellowships. www.asce.org/scholarships-fellowships

♦Prepare for the FE+PE exam with ASCE's review courses.



Newsletter On-Line

NSPE seeks to promote the importance of licensure to engineering students and has a number of resources to help you and your students better prepare for their future careers as licensed professional engineers. We encourage all engineering students to take advantage of **NSPE's FREE student membership** and receive the following:

- ♦ **Licensure information and discounts on FE and PE exam preparation materials.**
 - ♦ **NSPE scholarships** for high school seniors, undergraduate, and graduate students.
 - ♦ **Free webinars, downloadable guides, and books** on topics that range from ethics to professional development. New webinars for this year include “How to Get Your First Job” and the “Career Engineering Roadmap.”
 - ♦ **PE magazine**, the only magazine dedicated to the profession of engineering. *PE* magazine is packed with articles covering the latest issues in licensing, education, employment, ethics, legal and liability issues, and other topics.
 - ♦ **Members-only e-newsletters** like the *Student e-News & Young PE Quarterly*, designed for young engineers and students, with useful information on entering the engineering field, getting licensed, and climbing the career ladder.
- Online NSPE Job Board** where graduating seniors can search for jobs by location, salary, engineering discipline, and receive a biweekly newsletter of the latest openings.

Please take a moment to share this offer with your engineering students. Students can join for free (certain states charge a minimal student membership fee) online at www.nspe.org/freestudent. If you have any questions, please feel free to contact NSPE at students@nspe.org.



Newsletter On-Line

ASCE's 2013/2014 New Faces of Civil Engineering

Civil engineers in this country will face a variety of challenges in the future, among them meeting the needs of a growing population, rehabilitating the nation's infrastructure, giving the built environment sufficient resilience to withstand the effects of natural disasters and climate change, and improving transportation systems. The work that civil engineers do is indeed important, for they are the ones who must devise solutions in such areas as community planning, energy generation and distribution, urban redevelopment, drinking water, and traffic congestion. The solutions obtained will, to a great extent, depend on the imagination and creativity of the next generation of civil engineers.

"Our engineering students are the future, and these individuals embody the best," says ASCE's president, Gregory E. DiLoreto, P.E., P.L.S., D.WRE, F.ASCE. "We look forward to the great things they will accomplish over the course of their careers to serve the public."

Each year as part of its participation in the National Engineers Week Foundation's New Faces of Engineering program, ASCE, in a program of its own called New Faces of Civil Engineering, selects 10 engineers no older than 30 who have made extraordi-

nary contributions to the profession. Three of the ten engineers honored in 2013 are members of Chi Epsilon:

Kevin M. Ford, PhD El, A.M.ASCE, 27, *Transportation/Traffic Engineer* CH2M Hill, Chantilly, VA.

Erica (Leeds) Antoine, EIT, A.M.ASCE, 27, *Civil Associate* Burns Engineering Inc., Philadelphia, PA.

Vatsal A. Shah, PE, M.ASCE, 25, *Engineer IV* Hatch Mott MacDonald, Millburn, NJ.

Two of the ten engineers honored in 2014 are members of Chi Epsilon:

Ravi Shah, PE, M.ASCE, 29, *Assistant Project Manager* HDR, Irvine, CA.

Sean Walsh, PE, M.ASCE, 28, *Project Geotechnical Engineer* Eustis Engineering Services, LLC, New Orleans, LA.



Newsletter On-Line

ASCE — Tuition Assistance Available for Qualified Applicants

Students are invited to apply for valuable Society Scholarships and Society Fellowships for Fall 2015. Undergrads may apply for: Lawrence W. and Francis W. Cox Scholarship; Eugene C. Figg, Jr. Civil Engineering Scholarship, John Lenard Civil Engineering Scholarship, Robert B. B. and Josephine N. Moorman Scholarship, Samuel Fletcher Tapman ASCE Student Chapter Scholarship, Y.C. Yang Civil Engineering Scholarship.

Practicing engineers or earth scientists, professor or graduate students who are members of ASCE, and are exploring new applications of geotechnical engineering or the earth sciences to social, economic, environmental and political issues should consider applying for the Trent R. Dames and William W. Moore Fellowship. Other opportunities exist with: Freeman Fellowship, J. Waldo Smith Hydraulic Fellowship, and Arthur S. Tuttle Fellowship.

Complete applications are due February 10, 2015. For more information, [visit the webpage](#). For assistance, contact the [ASCE Awards Program](#).

Tau Beta Pi Awards \$473,000 to 242 Scholars Eleven Recipients are Chi Epsilon Members

The Fellowship Board of Tau Beta Pi, the engineering honor society, announces the selection of 242 Tau Beta Pi Scholars from 451 applicants for undergraduate study during the 2014-15 academic year. Most recipients will receive a cash award of \$2,000 for his or her senior year of engineering study, and a few will receive \$1,000 for one semester. All Tau Beta Pi Scholarships are awarded on the competitive criteria of high scholarship, campus leadership and service, and promise of future contributions to the engineering profession.

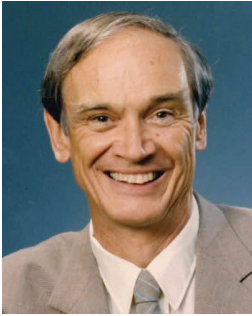
Those scholars who included Chi Epsilon among their student organization involvements are: Steven E. Ambers, Cal State-SLO; Anthony I Ambrosio-Meir, UCLA; Katherine E. Brock, Duke; Jordan C. Butler, Clarkson; Michael R. Flanagan, Cincinnati; John O Haugland, Marquette; Marissa N. Karpach, Washington; Rachel L. Kuprenas, South Carolina; Max H. Orenstein, Duke; Sathvika D. Ramaji, Miami; and Justin R. Vogel, Illinois. Congratulations!



Newsletter On-Line

Remembering Chuck Salmon

Dr. Charles Gerald 'Chuck' Salmon died unexpectedly on Monday, April 28, 2014 in Las Vegas Nevada. He was born in Detroit, Michigan on October 28, 1930 to Harold and Gwendolyn Salmon.



Chuck was a well-respected and distinguished Emeritus Professor of Civil and Environmental Engineering at the University of Wisconsin-Madison. He was a leader, a teacher, an advisor and mentor. He was renowned as author/co-author of a number of widely used textbooks on the subjects of concrete design, steel structures and structural analysis. He created a student activities endowment for student activities, the Bette and Chuck Salmon Student Fund.

Chuck served as Chi Epsilon advisor for many years at the UW-Madison, as well as National President from 1994-96, Vice-President from 1992-94, Marshal from 1986-92, and as District Councillor for 12 years for Chi Epsilon's North-Central region.

Over the years, he was very active in numerous professional engineering societies including: American Concrete Institute (ACI), American Welding Society (AWS), American Institute of Steel Construction (AISC), American Society of Civil Engineering (ASCE), American Society of Engineering Education (ASEE), National Society of Professional Engineers (NSPE), Precast/Prestressed Concrete Institute (PCI), and the Wisconsin Society of Professional Engineers (WSPE).

Chuck received many professional awards and honors through the years. Highlights include:

- ♦ The AISC T.R. Higgings Lectureship Award, 1981.
- ♦ The ACI Joe Kelly Award for outstanding contributions to education in concrete, 1983.
- ♦ The ACI Delmar L. Bloem Distinguished Service Award for outstanding performance while serving on ACI technical committees, 1984.
- ♦ Chi Epsilon Honor Member, 1989.
- ♦ ASCE Honorary Member, 1993, for his contribution to the art and science of structural engineering.
- ♦ ACI Honorary Member, 2000, for his exceptional achievements in teaching concrete structures to students.
- ♦ AISC Lifetime Achievement Award, 2009.
- ♦ WSPE Lifetime Achievement Award, 2013.

Dr. Salmon earned a reputation not only for brewing a big pot of coffee for students in his early morning classes, but more importantly for inspiring students with his friendly, yet challenging style and the breadth of his knowledge. His students credited him with providing the rigorous foundation that enabled future generations of structural engineers to keep building on research advances and applying them in the real world. Chuck touched the lives of many: his family, acquaintances from near and far, Engineering Faculty and staff, as well as scores of students that he mentored and assisted. He is greatly missed.



Newsletter On-Line

Member Memorials

Occasionally, family of Chi Epsilon members will inform us of the passing on of their loved ones. The following obituaries showcase their careers and their passions.

Peter Eldon Grafton, age 85, passed away on May 6, 2014. Peter grew up in Pullman, Washington and Reno, Nevada. He was a National Merit Scholar and earned his Bachelor of Science in Civil Engineering at Illinois Institute of Technology. He went on to earn a Master's Degree at the University of Illinois, Urbana-Champaign.

Peter served during the Korean War as an Engineer for the U.S. Army. After the war, Pete and Mary Lou moved to Seattle, Washington so that he could pursue a career at Boeing. He was in charge of the structural engineers in the aerospace group. He headed a team that determined the effects of the lightning strike on Apollo 12. He worked on many classified projects, and the development of the air launch cruise missile.

In 1985, Pete retired and he and Mary Lou moved from Yarrow Point in Bellevue to Anacortes, Washington. Pete and Mary Lou enjoyed many years together traveling, boating, and enjoying their beautiful home and garden near Deception Pass.

Pete was an avid outdoorsman. He loved yachting; owning a number of boats and taking extended vacations on the water with his family. He grew up skiing and hiking in the Sierra Nevada, and from this blossomed a passionate love for the moun-

tains that he took with him to Seattle. There he was a founding member of Crystal Mountain Ski Area and helped to start the "stress hikes" done by structure staff at Boeing. He enjoyed mathematics, problem solving, history, politics, and adventure novels.

Pete was a member of Theta Xi Fraternity, Tau Beta Pi ILB, Chi Epsilon, American Institute of Aeronautics and Astronautics, Anacortes Yacht Club, and the Island County Republican Party.

Pete will be especially remembered for his love of the outdoors, keen intellect, work ethic, integrity, will to live, and his devotion and loyalty to his beloved wife of 63 years, Mary Lou.





Newsletter On-Line

Leonard Alfred Traina, age 80, passed away on January 14, 2014. He was born on September 5, 1933 in New York, NY, to Salvatore and Emmanuella (Nellie Cali) Traina.

He earned his Bachelor's degree in civil engineering in 1955 from Union College, Schenectady, NY. He received his Master's in 1965 and his Ph.D. in 1968 both from the University of Wisconsin. He was employed by Allis-Chalmers Manufacturing Company as an architectural engineer from 1955-64 and the University of Wisconsin as an instructor of civil engineering from 1964-67. From 1957-59, he took a leave of absence from Allis-Chalmers and served as a 1st Lieutenant in the U.S. Army Medical Service Corps.

He moved his family to Las Cruces, New Mexico in 1967 after being hired as an associate professor by New Mexico State University. He was promoted to professor in 1978 and continued in that role until his retirement in 1997. During his tenure, he was the first recipient of the College of Engineering's Frank Bromilow Award for Excellence in Teaching. He also received the Westhafer Award for Excellence in Teaching for 1978-79. He was part of a team that was instrumental in developing the bridge inspection program for the Federal Government. He also served on a traveling committee which accredited college and university engineering programs. Professional affiliations included membership in the American Society of Civil Engineers, American Concrete Institute, National Society of Professional Engineers, and Chi Epsilon. He was member of Sonoma Springs Church in Las Cruces, NM, and

served as an Elder, Treasurer and Worship Committee Chairperson.

In his free time, he served as the family historian taking pictures and home movies, enjoyed golfing, working in his yard, visiting with friends and family, traveling with his wife and family, and watching sports, old television shows/movies.

